

SE-150HX HDMI KVM Extender

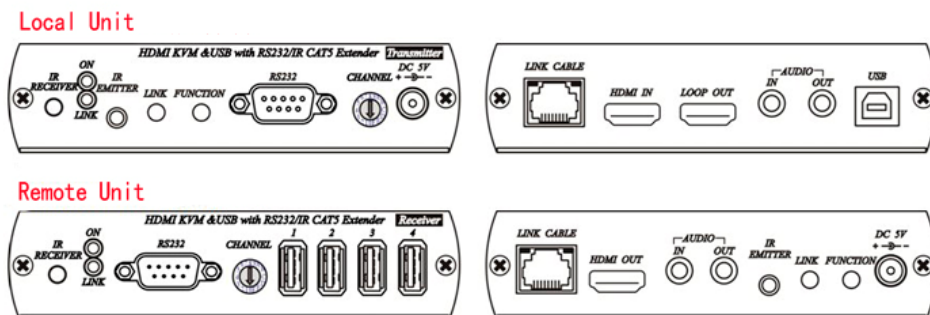


Extend HDMI, RS232, IR and USB signals over only one CAT5E/CAT6 cable, perfects for control remote machines and security monitoring systems. Especially idea for digital signage application.

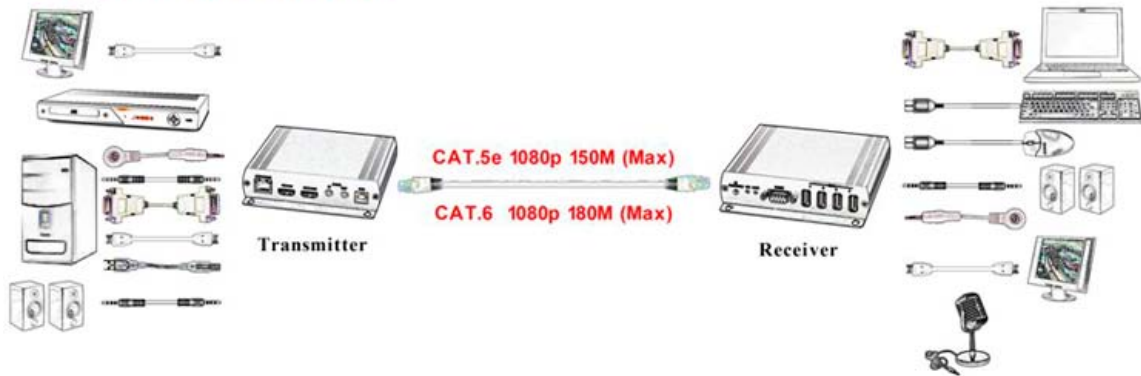
FEATURES

- Extend HDMI, RS232, IR and USB signals over one CAT.5e/CAT.6 cable
- Supports resolutions up to 1080p Full HD and 1920 x 1200 (WUXGA) 32bpp@ 60 Hz
- Transmission range up to 150 Meters over CAT.5e and 180 Meters over CAT.6
- Transmitter unit built in HDMI loop output
- Receiver unit with 4-ports USB devices (1 port USB 1.1 & 3 Port USB 2.0), to extend USB peripheral devices, such as flash disk, hard disk, keyboard, mouse, etc.
- Support point to point and multiple source devices to multi-display connections via Gigabit network switch
- Supports 2-way RS232 commands at baud rate 115,200 (control software on a PC, or other automated control system hardware) to control devices attached to the matrix using RS232. Full Duplex data communication
- Built in Bi-Directional analog audio
- Built in Bi-Directional IR
- Compliance with XGA、SXGA、UXGA、WSXGA、FULL HD、WUXGA
- Supports FULL HD (1920*1080) 或 WUXGA (1920*1200)。

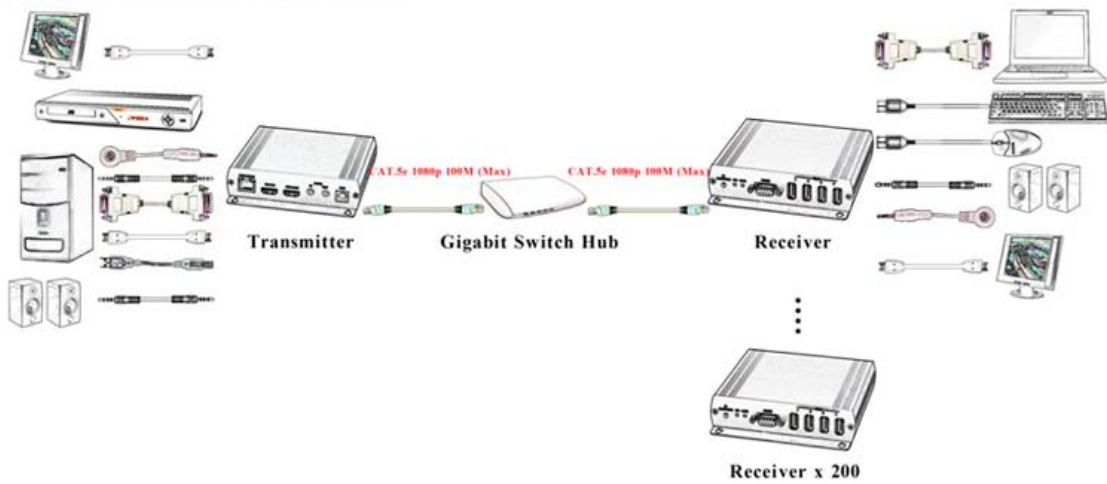
APPLICATIONS



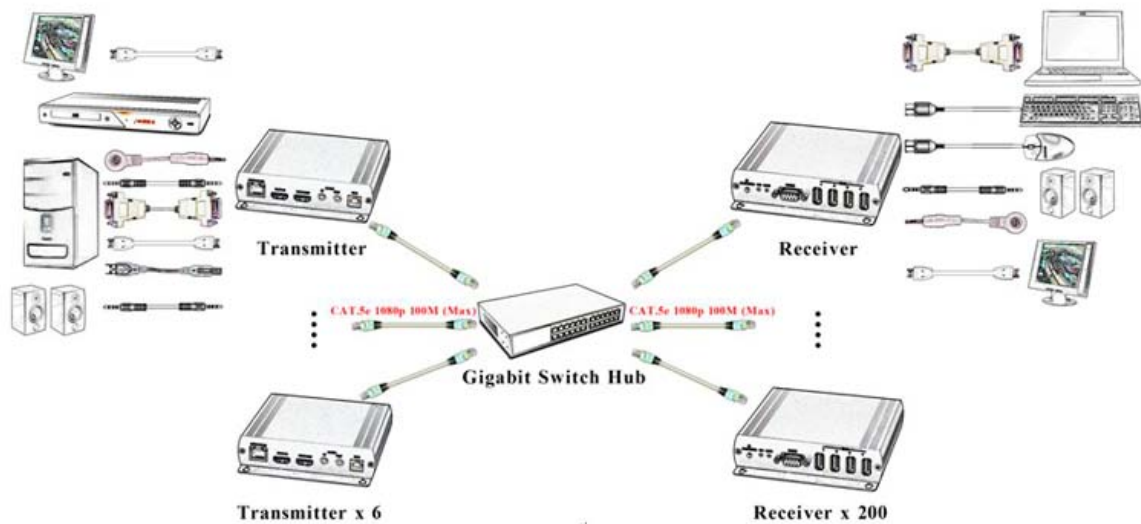
One to One Transmission



One to Many Transmission



Multiple to Multiple Transmission



SPECIFICATONS

Model no.		SE-150HX
Local Transmission Connectors	USB	USB- B/F x1
	Monitor	HDMI (or DVI) x2
	RS232	DB-9F x1
	Audio & Mic.	3.5mm Phone Jack (F) x 2
	IR Control	3.5mm Phone Jack (F) x 1 for IR Transceiver
Remote Receiver Connectors	USB	USB- A/F x 4
	Monitor	HDMI (or DVI) x1
	RS232	DB-9F x1
	Audio & Mic.	3.5mm Phone Jack (F) x 2
	IR Control	3.5mm Phone Jack (F) x 1 for IR Receiver
Resolutions		1920 x 1200p 32bpp@ 60 Hz
Distance / max.		150 Meters by Cat.5e (180 Meters by Cat.6)
Device to Device Connector		Cat5 - RJ45 Female
Power Supply		DC5V/ 2.0A
Environments		Working Temperature : 0~55°C , Storage : -20~85°C , Humidity : up to 95%
Size / WDH (mm)		125 x 140 x 30mm